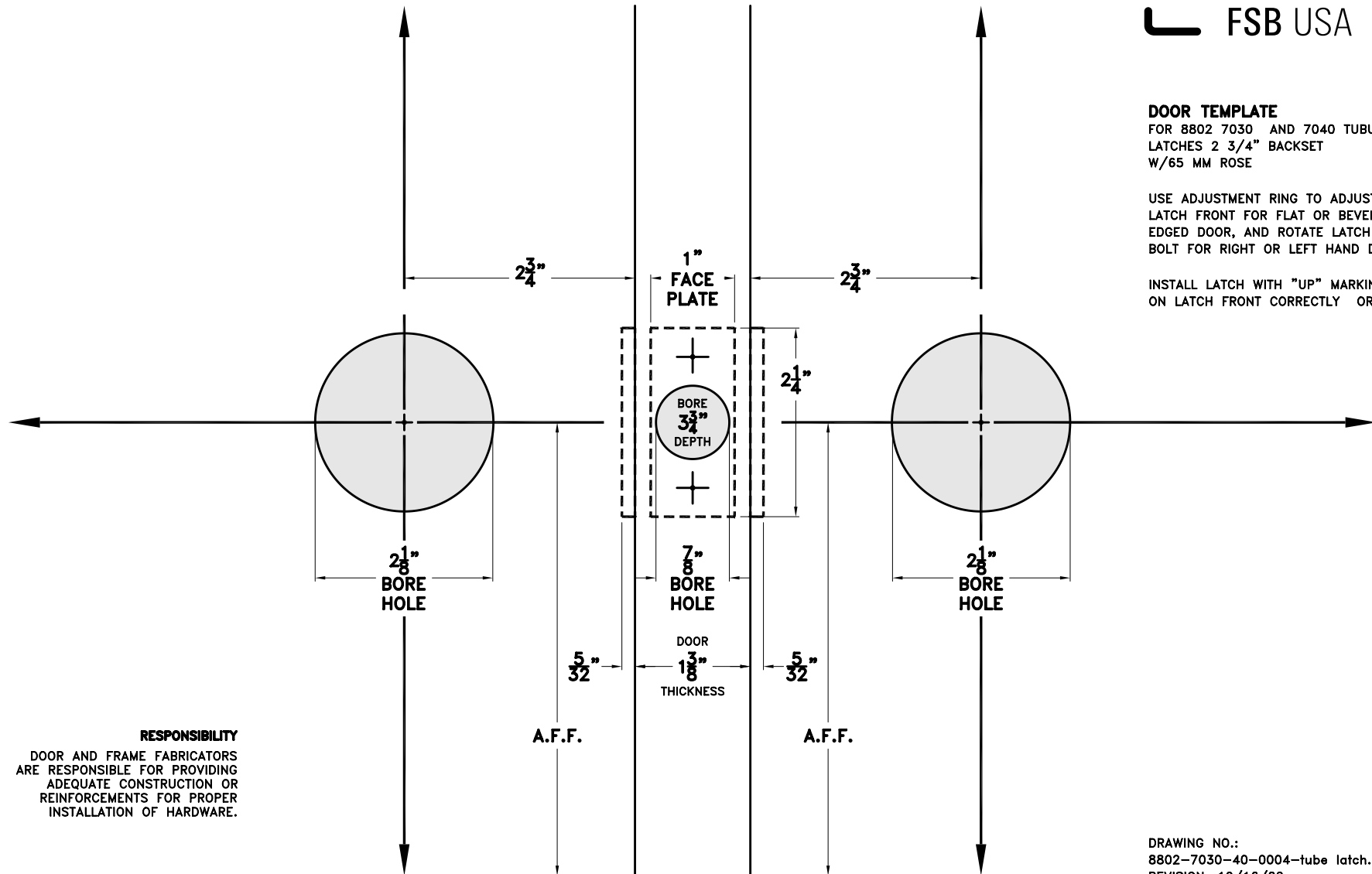


**DOOR TEMPLATE**

FOR 8802 7030 AND 7040 TUBULAR  
LATCHES 2 3/4" BACKSET  
W/65 MM ROSE

USE ADJUSTMENT RING TO ADJUST  
LATCH FRONT FOR FLAT OR BEVELED  
EDGED DOOR, AND ROTATE LATCH  
BOLT FOR RIGHT OR LEFT HAND DOOR.

INSTALL LATCH WITH "UP" MARKING  
ON LATCH FRONT CORRECTLY ORIENTED.



**RESPONSIBILITY**

DOOR AND FRAME FABRICATORS  
ARE RESPONSIBLE FOR PROVIDING  
ADEQUATE CONSTRUCTION OR  
REINFORCEMENTS FOR PROPER  
INSTALLATION OF HARDWARE.

DRAWING NO.:  
8802-7030-40-0004-tube latch.dwg  
REVISION: 10/16/02