

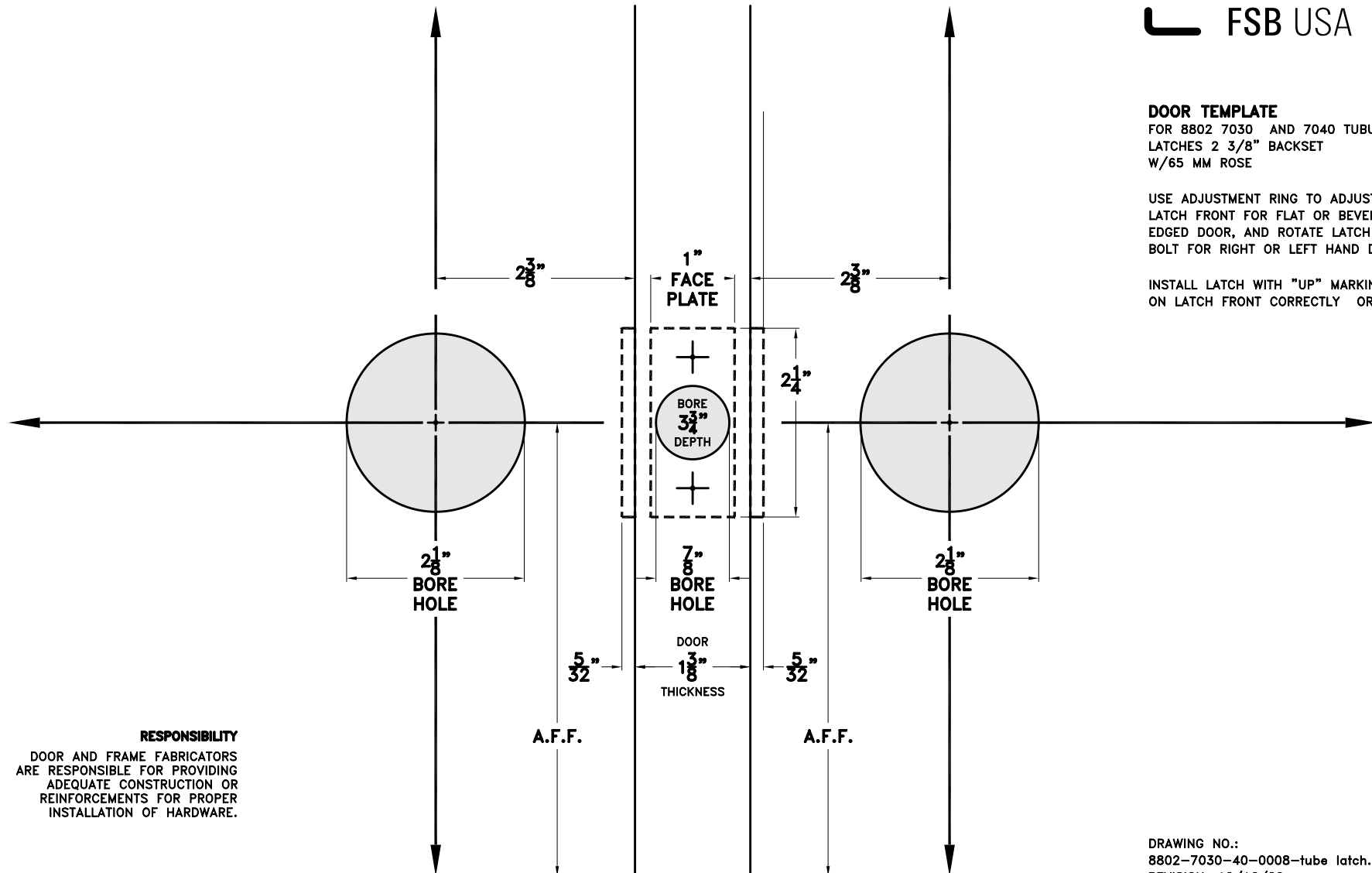


DOOR TEMPLATE

FOR 8802 7030 AND 7040 TUBULAR
LATCHES 2 3/8" BACKSET
W/65 MM ROSE

USE ADJUSTMENT RING TO ADJUST
LATCH FRONT FOR FLAT OR BEVELED
EDGED DOOR, AND ROTATE LATCH
BOLT FOR RIGHT OR LEFT HAND DOOR.

INSTALL LATCH WITH "UP" MARKING
ON LATCH FRONT CORRECTLY ORIENTED.



RESPONSIBILITY

DOOR AND FRAME FABRICATORS
ARE RESPONSIBLE FOR PROVIDING
ADEQUATE CONSTRUCTION OR
REINFORCEMENTS FOR PROPER
INSTALLATION OF HARDWARE.

DRAWING NO.:
8802-7030-40-0008-tube latch.dwg
REVISION: 10/16/02